

Visiting Ely Museum

Getting to the Museum:

Ely Museum is on the corner of Lynn Road and Market Street.

There is free parking in many car parks across Ely, though there are time restrictions. The museum is opposite the bus stop, approximately 20 metres away. There is very limited short stay parking on Market Street, directly next to the museum. Spaces do not belong to the museum and cannot be reserved. The nearest designated disabled spaces are nearby at the St Mary's Street Carpark.

The museum is approximately a 20 minute walk from the train station and taxis are readily available from the station and from the taxi rank approximately 50 metres from the museum.

Toilets:

There are four toilets in total, two on each floor.

There is one accessible toilet on the ground floor. Each floor has a toilet with baby changing facilities.

There are no hand dryers in any of the toilets. Paper towels are provided.

Access:

There is step free access from the road throughout Ely Museum.

There is a fully enclosed lift (size 1.1m x 1.4m with grab rail, max weight of 400kg) to access the first floor. There are also two staircases with handrails on both sides.

The lift buttons are tactile and the lift announces which floor you are on and when the doors are opening and closing.



Arriving at the Museum:

The gates to Ely Museum are on Market Street. Enter through the metal gates and walk across the paved courtyard. There are benches here and you are surrounded by traditional fenland plants.

The automatic glass sliding doors will open and you will enter the foyer of Ely Museum. Here you will find a member of staff on the front desk where you will show or purchase tickets.

In the gift shop area you will find our Explorer Chest. There are lots of things for children, and adults, to use as they explore the museum. There are also headphones and a selection of fidget toys for people to borrow on their visit. After your visit, please put the things back in the chest.

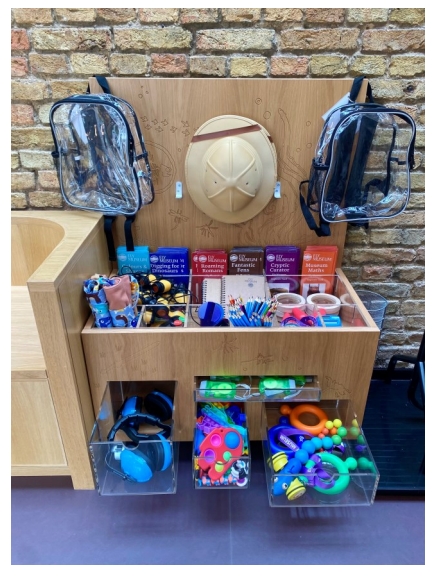
To the left of the front desk, you will find the Museum gift shop. You will come back to this on your way out too. There are lots of different items in the gift shop, some of which make noise and the shop is often busy.

There is no café at the museum. The museum is in the centre of town where you can find a wide variety of options. There are small tables, chairs and benches outside in the courtyard where you could eat a packed lunch too.

To the right of the front desk there is a seating area with a table and chairs. Unfortunately, we are unable to store bags, luggage or coats at the museum.

There is a fixed counter loop amplifier available at the front desk.

Complimentary tickets are available for carers, helpers or assistants of those who require them. Please just let the staff at the front desk know.



Guide Dogs ✓
Hearing Dogs ✓
Assistance Dogs ✓



Ground Floor:

From the shop, turn left into the first gallery where you will learn about the local area from extinct creatures to early settlers.

You might notice that the walls are bumpy because they are original to the 13th century building. The floor is covered in a type of marmoleum and covered in a special design. The gallery is lit by natural light and spot lights which are bright.

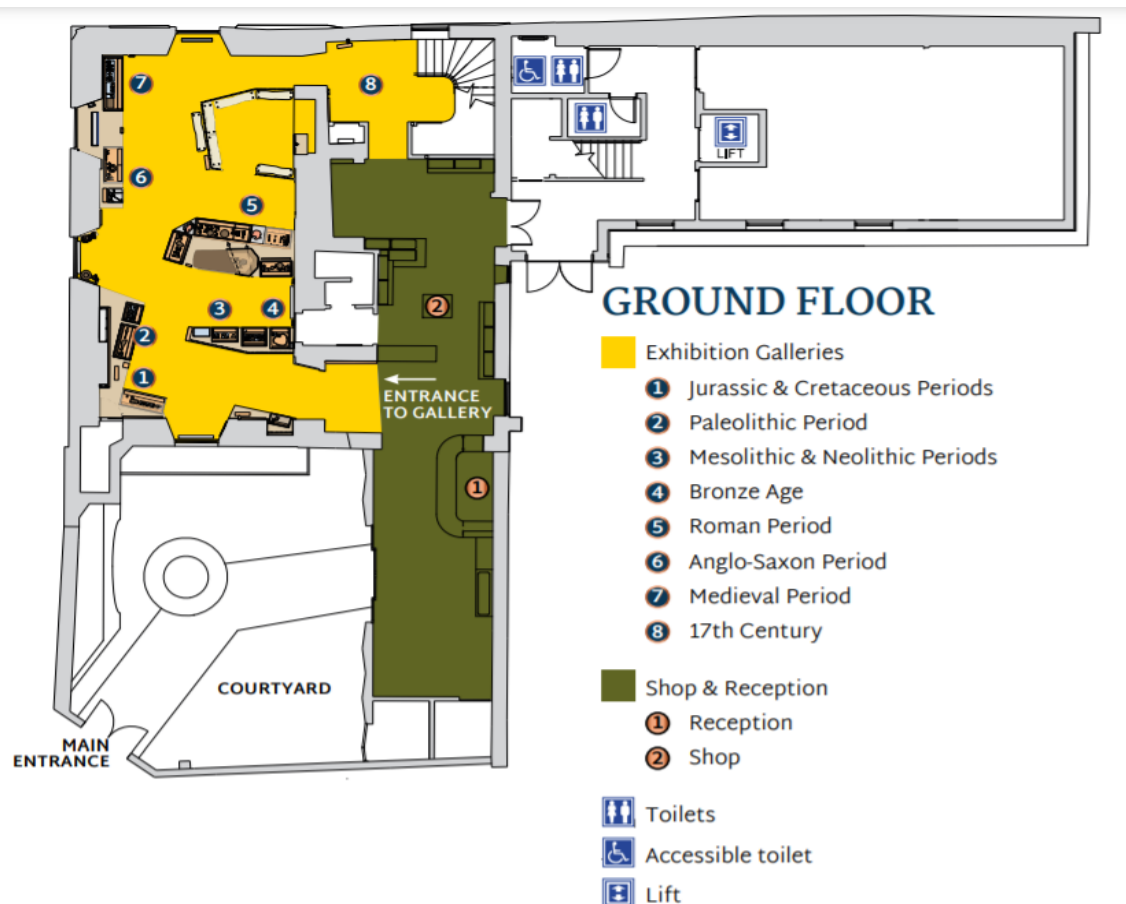


You may also hear bird sound and the sound of a flint knapping video demonstration. You will also find dressing up clothes and hats that you might like to try on.

There are glass cases with objects inside as well as objects you can touch. The ground floor gallery covers the period from fossils to medieval settlers in Ely.

There is a Roman skeleton on display in a large stone coffin. In the wise woman's hut, there are several films, telling traditional fenland tales. Some of these stories may be scary. Please ask a member of staff for more information if needed.

The videos are all subtitled and there is seating to watch the longer videos in the wise woman's hut.



First Floor:

To get to the first floor of Ely Museum use either the staircase or the lift.

The galleries upstairs include displays on farming, the war, and Ely in the 19th century. There are sharp farming tools on display, so please be careful.

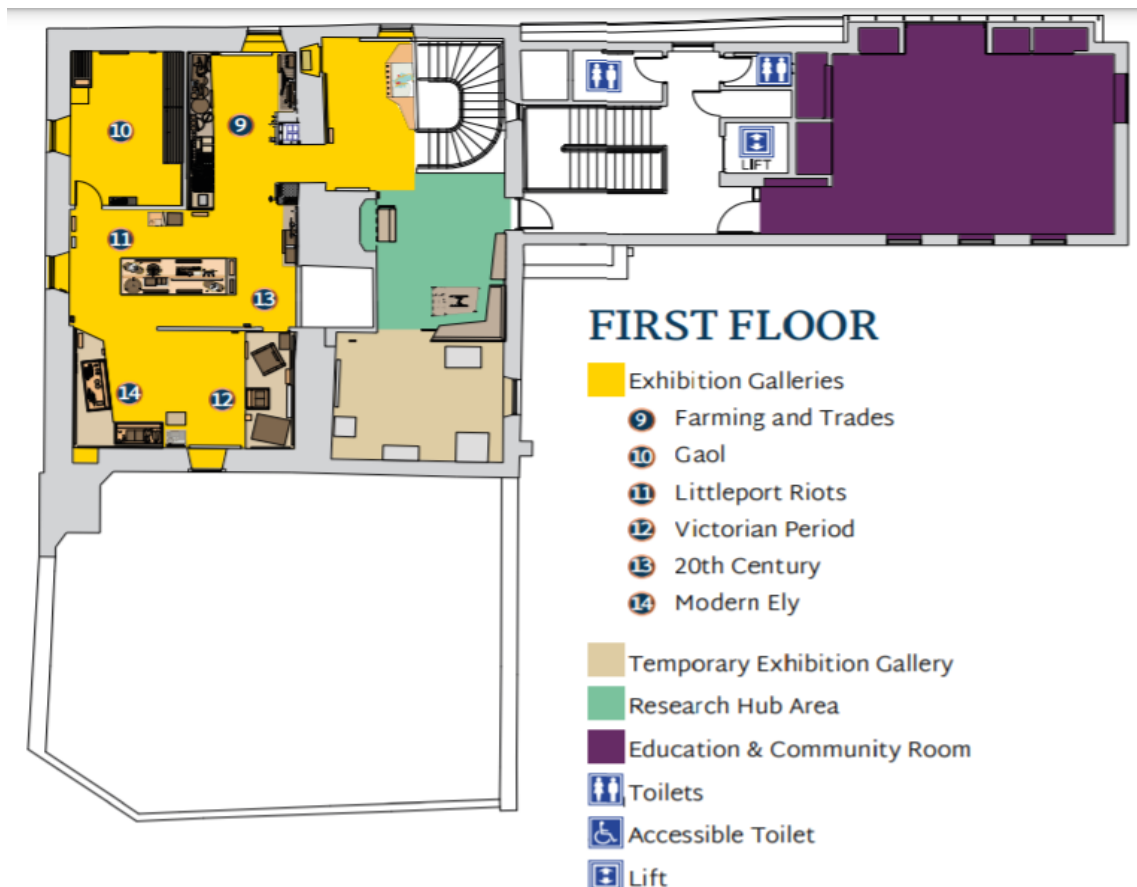
There are lots of different hands-on activities to try throughout the first floor of the museum.



There is also a temporary exhibition gallery which has changing exhibitions throughout the year.

The research hub is a desk with two computer screens and seating. There is a bench which wraps around two sides and stools to sit on. The desk is also accessible for wheelchair users. At the research hub you will find books about local history to read. Please put the copies back on the shelf when you are finished. On the touch-screens you can swipe through to see pictures and find more information about the objects at Ely Museum, including the objects not normally on display. You can also watch different films about the history of the Fens. Some of the films have subtitles.

The floor is level and covered with a dark type of marmoleum. The galleries are fully wheelchair accessible throughout.



Gaol cell:

On the first floor you will also find the gaol cell. This building was originally a gaol, a type of prison, and prisoners were kept here.

Gaol is pronounced "jail".

The wooden floor in the gaol cell is uneven, so please be careful. The walls are also covered in wooden planking and include lots of graffiti left by the prisoners.



There are benches around the cell and you can listen to the stories from some of the prisoners. Some larger wheelchairs may not fit through the historic doorway into the gaol, so the stories are available outside the door too. When you walk into the gaol cell, you will hear a loud voice. This is the gaoler!

In the gaol cell there is also a display of handcuffs and chains used to restrain the prisoners.



Aedwen Room:

The Aedwen room (pronounced aid-wen) is a large room upstairs at Ely Museum. This room is used for lots of different things, including school visits, group visits and meetings.

If you are visiting for a school visit, the Aedwen room might be set up with different objects and tables used for the session. The room might also be empty.

There are tables and chairs for use in the Aedwen room. There are lots of windows in the Aedwen room, including a big floor to ceiling window that looks over Lynn Road.

There is a single output phase amplifier with perimeter loop in the Aedwen room.




Quiet Hours:

Once a month, there is a 'Quiet Hours' session at the museum. Everyone is welcome to attend, and it is ideal for those who would prefer a quieter, more relaxed museum visit. All of the exhibits and activities will be available as usual, however the sounds are reduced, muted or subtitled throughout the building.

The Quiet Hours begin at 3:30pm and finish at 5pm when the museum closes.

You are not expected to be quiet during our Quiet Hours! We hope you enjoy your visit and make as much, or as little noise as you'd like!

There is also a quiet space in the Aedwen Room with chairs, tables and a sensory tent to relax in.

 ELY MUSEUM


Quiet Hours

Ideal for those who would benefit from a quieter, more relaxed museum visit.

Second Weds of the month
3.30 – 5pm

All welcome | Quiet space in the Aedwen Room
Normal admission charges apply | Accompanying carers free

More information, access guide & social story:
www.elymuseum.org.uk/accessibility-and-access-information



	During usual opening times	During Quiet Hours
Noise cancelling headphones & fidget toys available to borrow in the Explorer Chest	✓	✓
Bird sounds within the ground floor galleries	✓	✗
Video about Flint Knapping. (You must press the screen to start it)	✓	✓ Volume turned down
Stories in the Wise Woman's Hut (Subtitled, you must press the screen to start it)	✓	✓ Volume turned down
Video about drainage (You must press the screen to start it)	✓	✓ Volume turned down
Prisoner Stories in the Gaol Cell (You must push the buttons to start it)	✓ (Both inside & outside the gaol cell + automatic greeting by the Gaoler when you enter)	✓ (Both inside & outside the gaol cell. <u>No</u> greeting by the Gaoler)
The Hub - Explore the Collection & watch archive films (You must press the screen to start it)	✓	✓ Headphones available to watch the films on
Quiet Space in the Aedwen Room	✗	✓