

# Write a museum label

Museums put labels next to objects and paintings to tell you more about what you are looking at. Like a label in a shop or on a new piece of clothing, the label tells you who made something, what it is made of and a little bit more about the item. Museum labels might also include extra information about the artist or maker, the person who used or owned the object, where it was found or how the museum came to have it on display.

This is a label from a stained glass panel at The Stained Glass Museum here in Ely:

**Name** → **Suffer the Little Children**

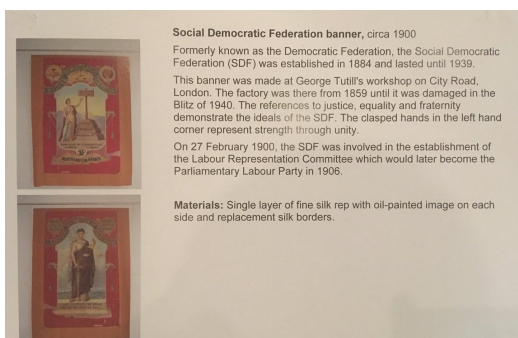
**Year it was made & who by** → **1907**  
**Designed and made by Henry Holiday (1839-1927)**  
**Essex Unitarian Church, Notting Hill, London**

**Where it came from** →

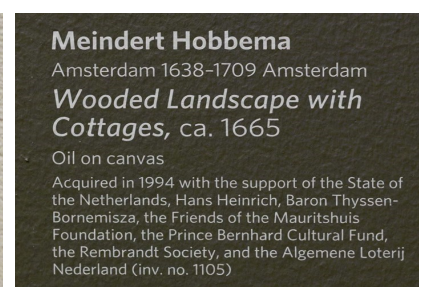
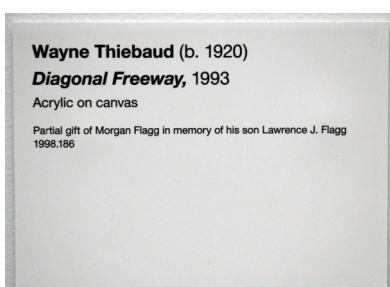
**More information about the object & its history** → **These two panels by Henry Holiday are from a three-light window. They show scenes from the ministry of Christ. The window was installed in the Essex Unitarian Church in Notting Hill as a memorial window to the Durning-Lawrence family.**

**How it came to the museum & when** → **Gift of Essex Unitarian Church, 1973**

**Every object in a museum has its own unique number** → **(1973.3.1)**



These are some examples from other museums. Some include more, or less information. Some also include pictures or the material the object is made from!



# Make a Museum Label

We've made a label here for a Lego rocket ship - why not make your own museum label for something in your bedroom or house?

Remember to think about what the object is & what you can say about it! Where did it come from & how was it made?

## Lego Rocket Ship

2020

Made by Emily

Made during the Covid-19 pandemic lockdown this Lego rocket ship uses a variety of colours and shapes.

Originally from a home in Ely, Cambridgeshire



Donated by the artist

(2020.5.2)

Make it on the computer or use a piece of paper and some pencils to make your own